

Clearview Street

Neighbourhood Improvement Area

Public Realm Proposals

SCHEME BACKGROUND

In 2022 the Constable of St Helier identified several **Neighbourhood Improvement Areas (NIA)**, intended to deliver significant public realm enhancements for their local communities. Pomona Road and Poonah Road were chosen as the first parts of these NIA to be implemented, with Pomona Road delivered in 2025 and Poonah Road due to be completed by the end of March. These schemes established a palette of materials and design approaches which are intended to be applied elsewhere to create a consistent character and quality.

Clearview Street has been identified as the next NIA, offering potential for improvements to the public realm, responding to a number of considerations:

- ▶ **Pavement and road surfaces are in poor condition**
- ▶ **There is limited planting (or green infrastructure) along the street**
- ▶ **The existing street trees are in unattractive or inappropriate containers**
- ▶ **There is little sense of arrival or identity in Clearview Street**
- ▶ **Streetlights and columns are degraded**
- ▶ **Vehicle parking provision is to be maintained as existing**

A sketch design has been developed, which is comprised of a number of elements including:

- ▶ **The inclusion of more green infrastructure, through the provision of trees, planting areas and hanging baskets**
- ▶ **Enhancements for walking and cycling, with smoother and more consistent surfaces**
- ▶ **High quality granite slab paving at key locations**
- ▶ **Granite kerbs and edgings throughout the street**
- ▶ **Attractive cladding of existing concrete planters**
- ▶ **Renewed heritage-style street lighting**
- ▶ **More litter bins of appropriate design**
- ▶ **Welcoming neighbourhood signage**
- ▶ **The removal or replacement of bollards**
- ▶ **Traffic calming through textured road surfaces as well as ramps**

The purpose of this exhibition is to explain the developed scheme and gather the community's response, before it is finalised for implementation. The proposals illustrated here are subject to budget review and approval by the Rates Assembly.

We'll be collecting your views through a questionnaire and would very much appreciate your input.



Clearview Street

Neighbourhood Improvement Area

Public Realm Proposals

A gateway will be created at the junction of Clearview Street and Brighton Road, with a textured crossing and granite paving marking the road as a residential area, including planting, and a neighbourhood sign.

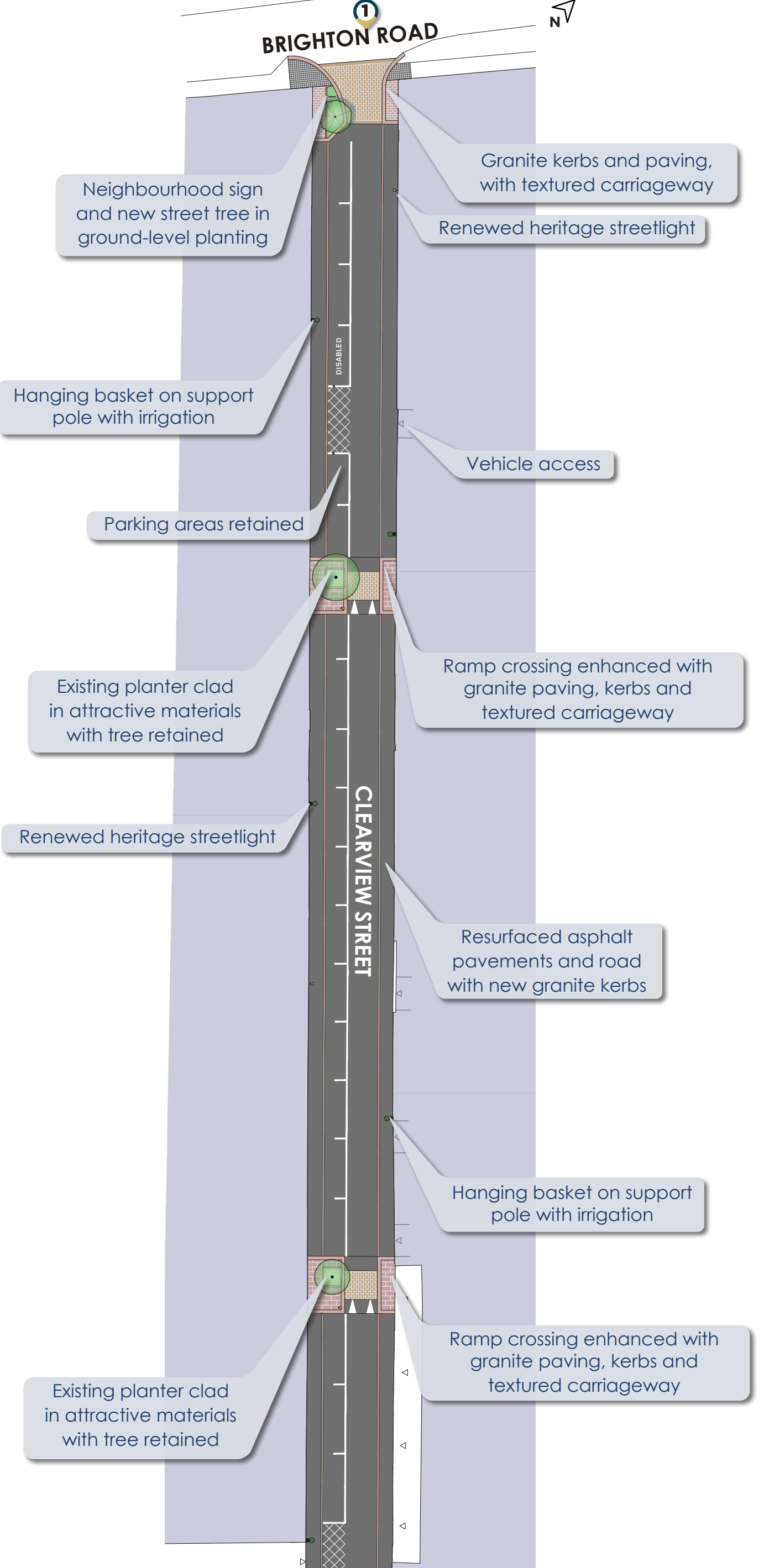
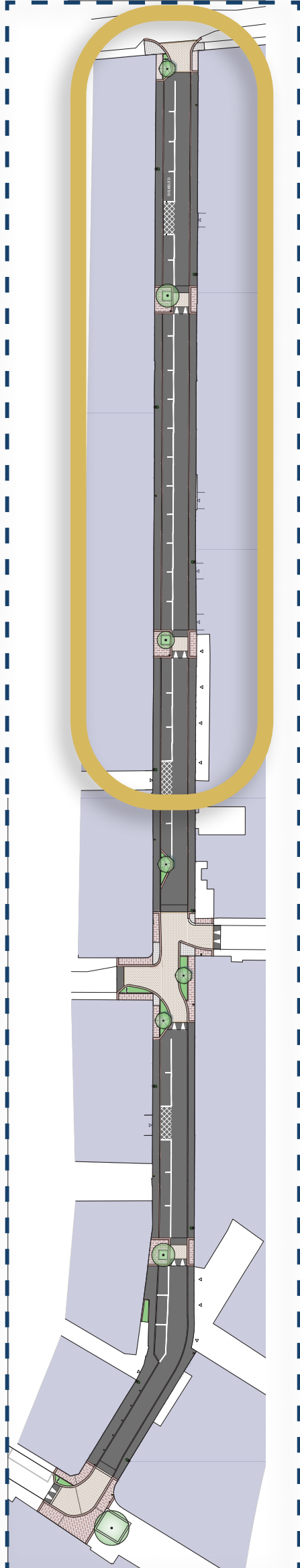
In the sections of the road with on-street parking, granite kerbs will replace the degraded concrete kerbs, along with a new asphalt surface to the pavements and carriageway.

Hanging basket poles, with integrated automatic irrigation, will provide a regular green component along the street, while the existing heritage-style lights and columns will be replaced and upgraded.

The existing ramps along the road will be resurfaced, with a textured treatment to signal the pedestrian crossing. The pavements either side will become granite paved and defined by wide kerbs.

The concrete planters which contain the existing trees will be clad in a more attractive material to improve their appearance without affecting the trees themselves. Ground-level planting in the planters will add leaf and flower interest.

SCHEME EXTENT



Clearview Street

Neighbourhood Improvement Area

Public Realm Proposals



1

View from Brighton Road into Clearview Street, showing the pedestrian priority crossing and neighbourhood gateway.



2

View from the Clairvale Road junction looking north along Clearview Street.



PARISH OF
ST HELIER



Clearview Street

Neighbourhood Improvement Area

Public Realm Proposals

The small build-out north of Clairvale Road will be enlarged and planted with a tree and groundcover shrubs, to guide vehicles while adding green infrastructure.

Neighbourhood signs will welcome drivers and pedestrians entering Clearview Street from both Clairvale Road and Albert Street.

The central junction area will be defined through consistent surface treatments and raised carriageway. A textured road surface will suggest sett paving across the area, emphasizing a predominantly pedestrian environment. Granite slabs and kerbs will apply to all of the junction pavements.

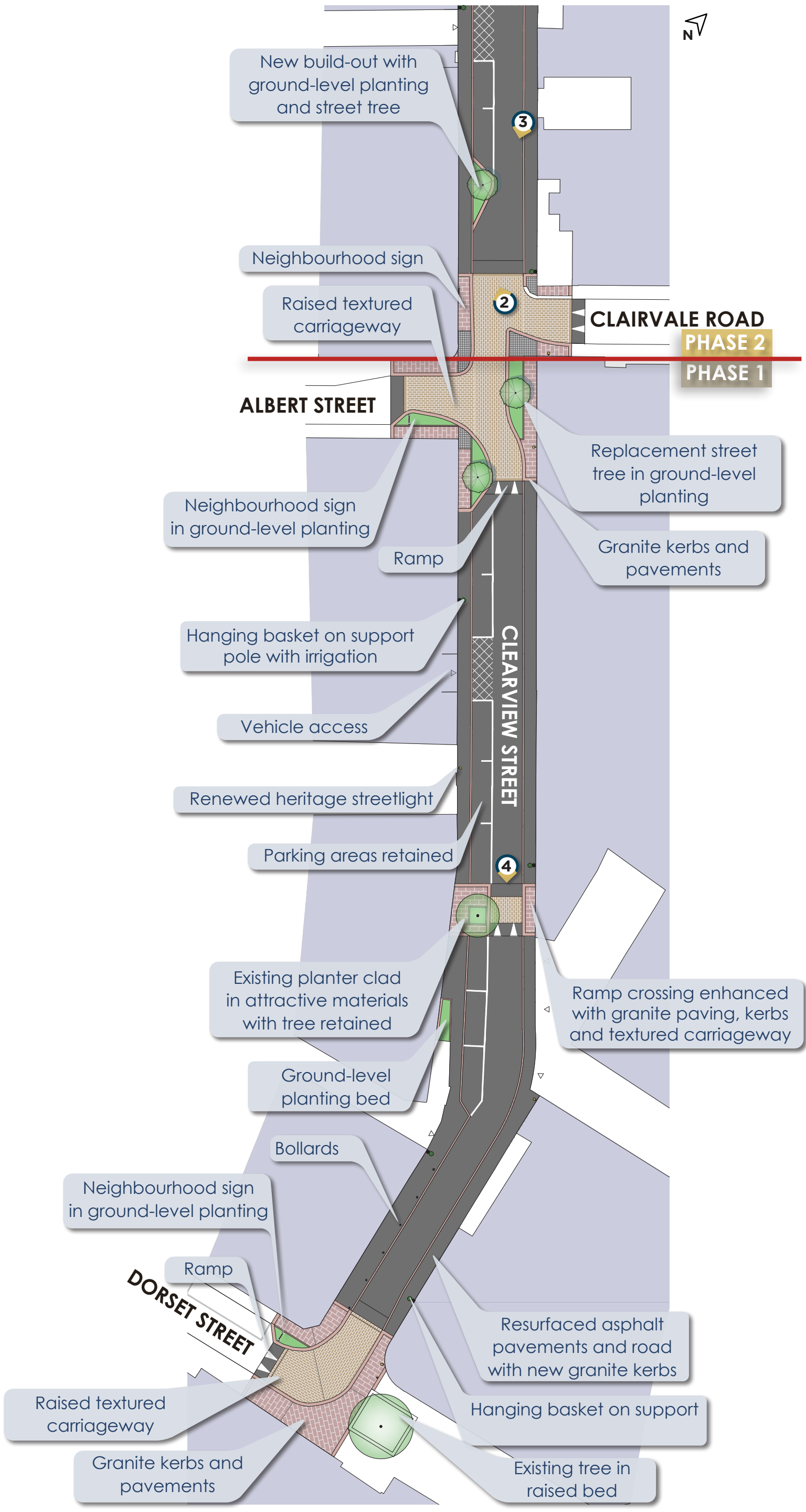
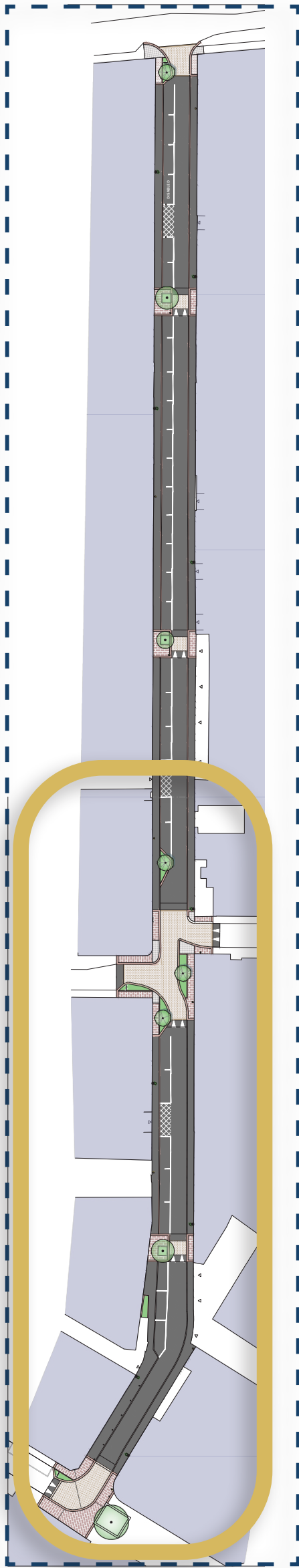
Ground-level planting and new street trees will bring seasonal colour and foliage to this central space, as well as visually linking to other areas of vegetation and trees up and down the street.

As in the northern section, the existing ramp crossing will be enhanced with surface treatments on both the carriageway and pavements, with the existing planter clad in more attractive materials.

Renewed street-lights and hanging baskets will continue the enhanced character along the southern part of Clearview Street, along with new granite kerbs and asphalt surfaces.

Another gateway will be created at the junction with Dorset Street, with the combination of granite pavements, a textured raised carriageway, planting and a neighbourhood sign.

SCHEME EXTENT



PARISH OF
ST HELIER

Clearview Street

Neighbourhood Improvement Area

Public Realm Proposals



View looking south towards central junction, showing surface treatments, trees, planting, and neighbourhood sign.



View looking south towards Dorset Street junction, showing resurfaced ramp and pedestrian crossing.



Clearview Street

Neighbourhood Improvement Area

Public Realm Proposals

NEXT STEPS

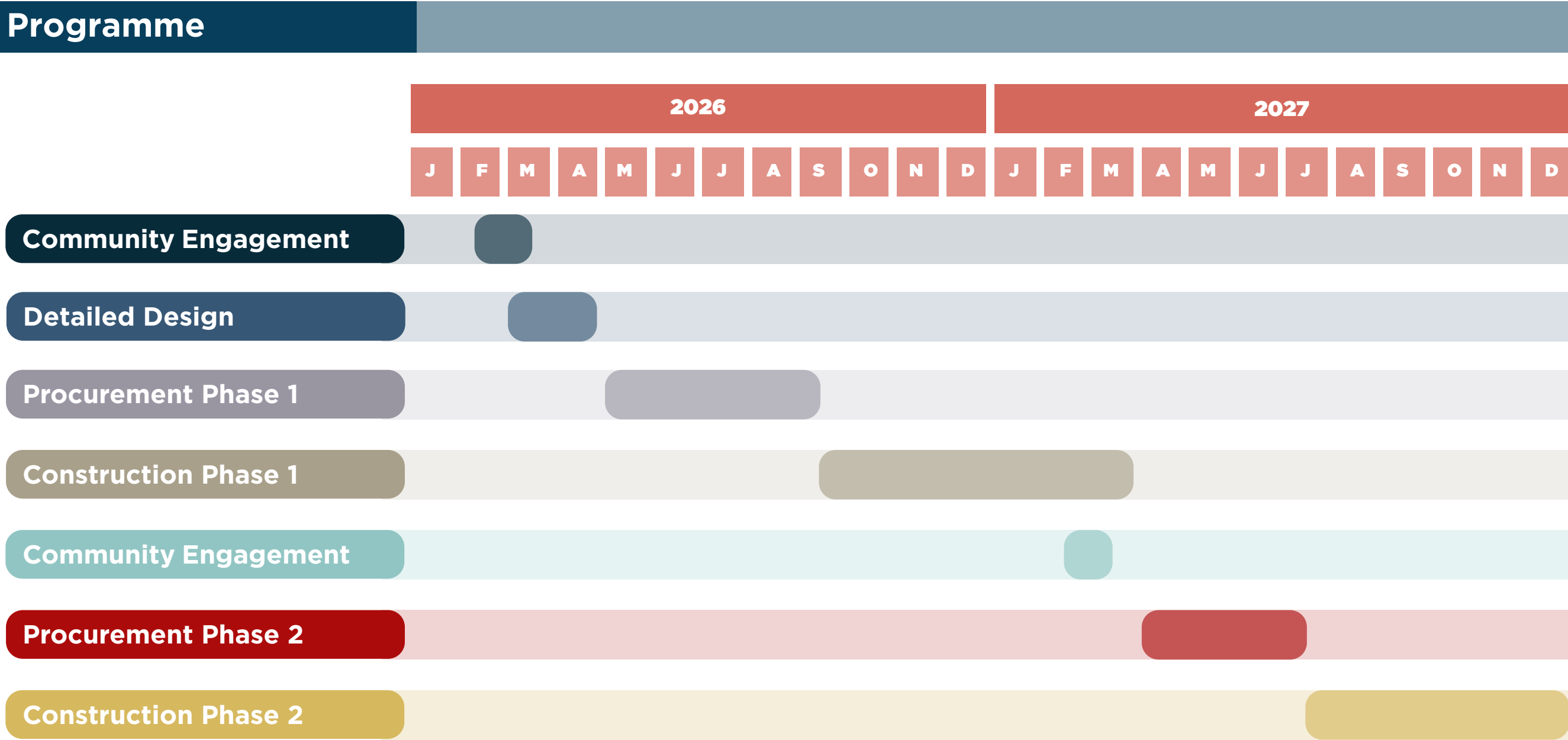
A community consultation is taking place from the 2nd to 16th March, with these proposals available on the Parish website along with a questionnaire to collect responses.



<https://sthelier.je/public-consultations/>

The next stage will be to design the scheme in detail, including liaison with key stakeholders, regulators and suppliers, with the intention to begin construction from Winter 2026.

Programme



Contact

If you have any queries please contact us

Call: 01534 811811

Email to: infrastructure@sthelier.je

