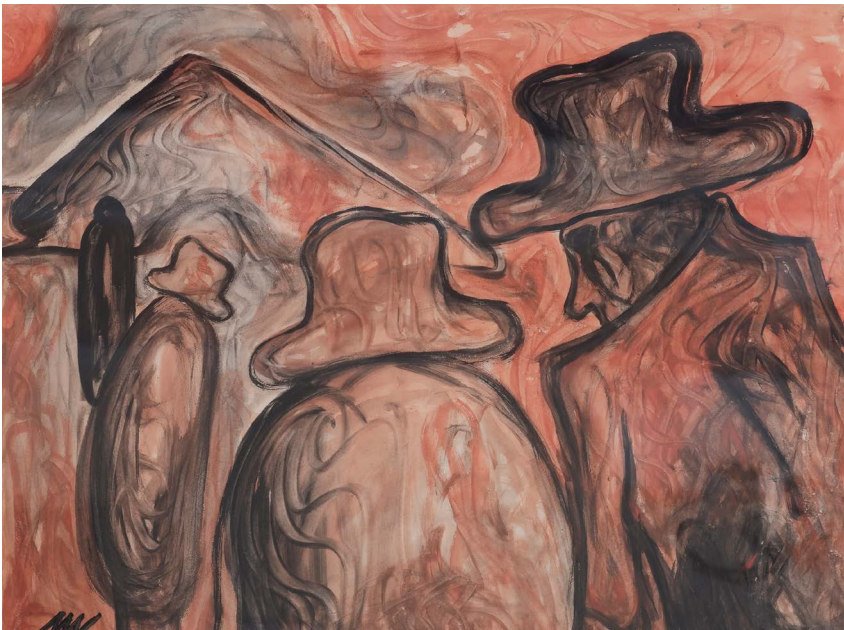




Willem Linnig
Tavern Interior
 Oil on Board, 1850s
 63 x 47.5cm

A typical Dutch scene with two men and a woman in the centre grouped around an oak table. On the floor is a stoneware jug and a copper wine cooler on a stool by the table. The central man is holding a glass and his pipe and if you look to the far left of the painting you can just make out the silhouette of a violinist entertaining the customers.



Sepp Mahler
Four Figures
 Watercolour, 2005
 54 x 70cm

This painting was presented to the Parish of St Helier by the artist's daughter on the 60th anniversary of the Liberation of Jersey. Mahler (1901 – 1975) was an expressionist painter from the town in Germany where more than 600 Islanders were deported in 1942. The twinning of the Bad Wurzach with St Helier was achieved by Constable Crowcroft in 2002.