

Gift of a new private footway in Garden Lane to the rear of 'The Spire'

For consideration by the Parish Assembly
on 29 January 2025 at 7:00pm

PARISH OF ST HELIER

P.01/2025



Area of private footway being offered to the Parish shown dotted (approx. 7.75 sq.m. (83.42 sq.ft.))



Blue circle indicates the approximate location of private footway in Garden Lane

PROPOSITION

PARISHIONERS are asked to take into consideration and if deemed advisable:

To approve a recommendation of the Connétable, Roads Committee and Procureurs du Bien Public to accept a gift of a new private footway in Garden Lane which forms the south-west corner of the new development known as "The Spire".

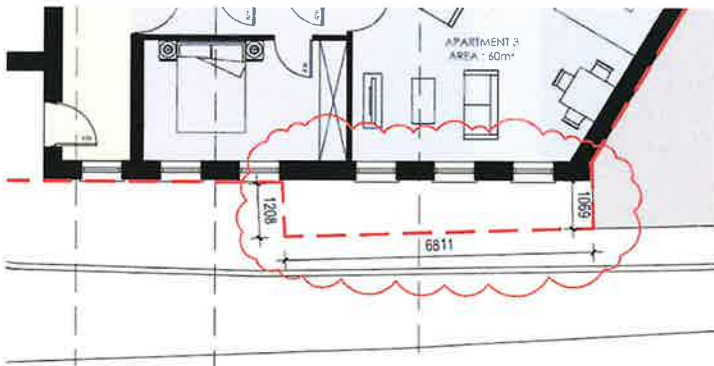
The Assembly is to instruct the Connétable and at least one Procureur du Bien Public to pass contract, with owner paying all reasonable legal costs associated with the transfer.

REPORT

The Parish has been offered the gift of a piece of land in Garden Lane by "Cotton End Properties Limited", pursuant to the Planning Obligation Agreement. The land forms the south-west corner of the development known as "The Spire".

This is also pursuant to the Roads Committee's comments on the Planning application (P/2021/1700).

The area of land offered to the Parish is as per the clouded area measuring approx. 7.75 sq.m. (83.42 sq.ft.) marked on the plan below:



The Parish confirms that the footway has been constructed in accordance with Parish requirements.

The Parish is seeking approval from the Parish Assembly to accept this gift which will be transferred at no cost to the Parish.