

Pomona Road & Poonah Road

Neighbourhood Improvement Area

Public Realm Proposals

SCHEME BACKGROUND

In 2022 the Constable of St Helier identified several **Neighbourhood Improvement Areas (NIA)**, which are intended to deliver significant public realm enhancements for their local communities.

Pomona Road and Poonah Road have been selected as the first parts of these NIA to be implemented, subject to funding being successfully secured.

The views and requirements of the community have been gathered to date through the Poonah Road/Pomona Road Neighbourhood Improvement Group, through 2022 and 23.

From that process a number of **community priorities** became apparent, which are summarised below, with their inclusion within the design:

- ▶ **The inclusion of more green space, through elements such as trees, planting areas, hanging baskets** - Included in scheme ✓
- ▶ **Enhancements for walking and cycling** - Included in scheme ✓
- ▶ **Wider pavements**- Included in scheme ✓
- ▶ **The removal or replacement of bollards and rubber build-out features** - Included in scheme ✓
- ▶ **Granite surfaced pavements** - Included in scheme, at key locations ✓
- ▶ **Heritage-style street lighting** - Included in scheme ✓
- ▶ **More litter bins of appropriate design** - Included in scheme ✓
- ▶ **Improved and more suitable neighbourhood signage** - Included in scheme ✓
- ▶ **Traffic calming through textured road surfaces** - Included in scheme ✓
- ▶ **Reflection of the area's history and heritage** - To be considered in the next design stage ⚠

The purpose of this exhibition is to explain the developed scheme and gather the community's response, before it is finalised for implementation.

The proposals illustrated here are subject to budget review and approval by the Rates Assembly.

We'll be collecting your views through a questionnaire and would very much appreciate your input.



Pomona Road & Poonah Road

Neighbourhood Improvement Area

Public Realm Proposals

The overall objective for Pomona Road is to reduce the dominance of the road and traffic, create more pedestrian space of a higher quality and introduce green infrastructure wherever possible.

From Rouge Bouillon an entrance gateway will be created with a pedestrian priority crossing marking the road as a residential area, including planting and a neighbourhood sign.

The on-street parking will be retained but set within built-out widened pavements. This additional space will allow street trees, cycle stands and litter bins as well as more walking space.

Chicane features will help to slow traffic while creating space for attractive planting and trees.

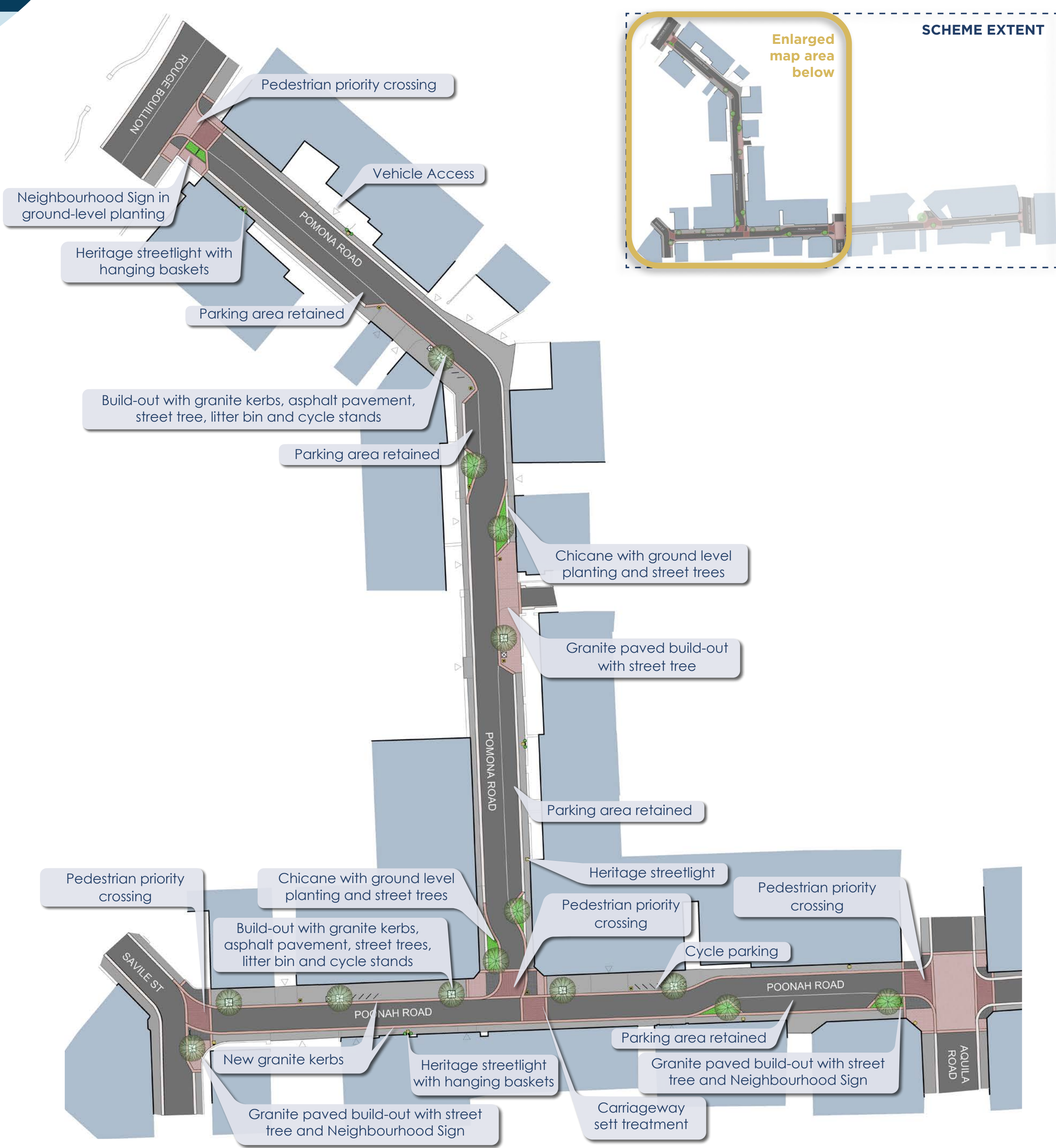
Granite paving will be used in focussed areas, marking junctions and key pedestrian spaces, combined with a textured road surface treatment.

New street-lighting, in a heritage style, will be provided throughout, of a scale more appropriate to a neighbourhood setting and with a warm light colour. Hanging baskets on some of the light columns will provide seasonal colour and interest, maintained by an automatic irrigation system.

On Poonah Road, widened pavements create space for street trees, cycle parking and litter bins. Traditional granite kerbs will replace the existing concrete kerbs.

A chicane treatment on Poonah Road between Aquila Road and Pomona Road creates opportunities for ground level planting and more street trees, as well as slowing traffic.

Pedestrian priority crossings, granite paving and gateway treatments will be provided at the Poonah Road junctions with Savile Street, Pomona Road and Aquila Road.



PARISH OF
ST HELIER

Pomona Road & Poonah Road

Neighbourhood Improvement Area

Public Realm Proposals



View from Rouge Bouillon into Pomona Road, showing the pedestrian priority crossing and neighbourhood gateway.



View on Pomona Road looking towards Poonah Road, showing the widened pavement, chicane feature and street trees.



PARISH OF
ST HELIER



Pomona Road & Poonah Road

Neighbourhood Improvement Area

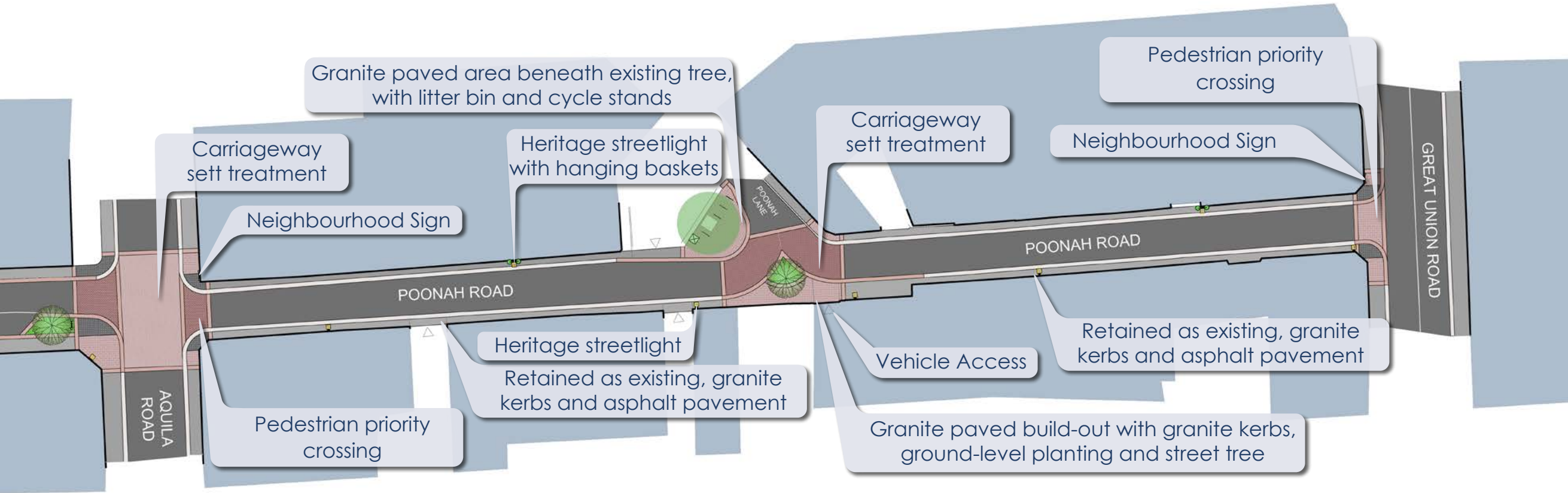
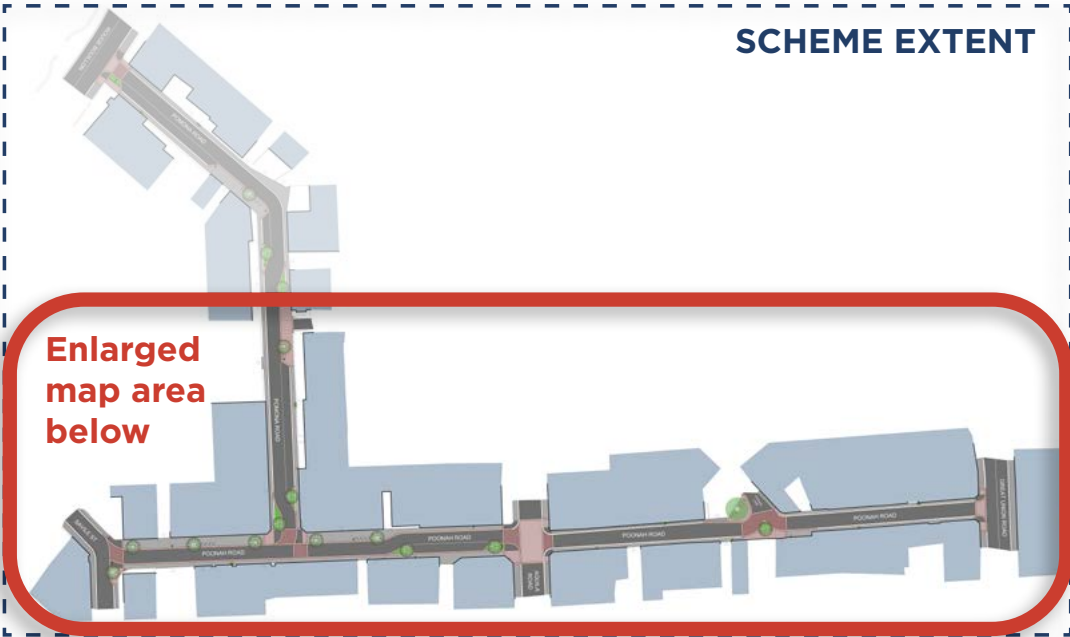
Public Realm Proposals

On Aquila Road a textured road treatment will visually link the two sections of Poonah Road.

Pedestrian priority crossings, neighbourhood signs and surface treatments will create gateways into the western and eastern sections of Poonah Road.

Heritage street lighting will enhance the character of Poonah Lane, while a new street tree and planting on the junction with Poonah Lane will create a focus in views along the road. A textured road surface and granite paving around this junction enhance the character and slow traffic. Cycle parking and a litter bin next to the existing tree will provide a community facility.

The eastern entrance into Poonah Lane, from Great Union Road, will again be marked by a pedestrian priority crossing, surface treatments and a neighbourhood sign.



PARISH OF
ST HELIER



Pomona Road & Poonah Road

Neighbourhood Improvement Area

Public Realm Proposals



View on Poonah Road looking towards Savile Street, showing the junction with Pomona Road, granite paving, carriageway surface treatments and street trees.



View showing the junction with Poonah Lane, showing a pavement build out, planting bed, street tree and road treatments.



PARISH OF
ST HELIER



Pomona Road & Poonah Road

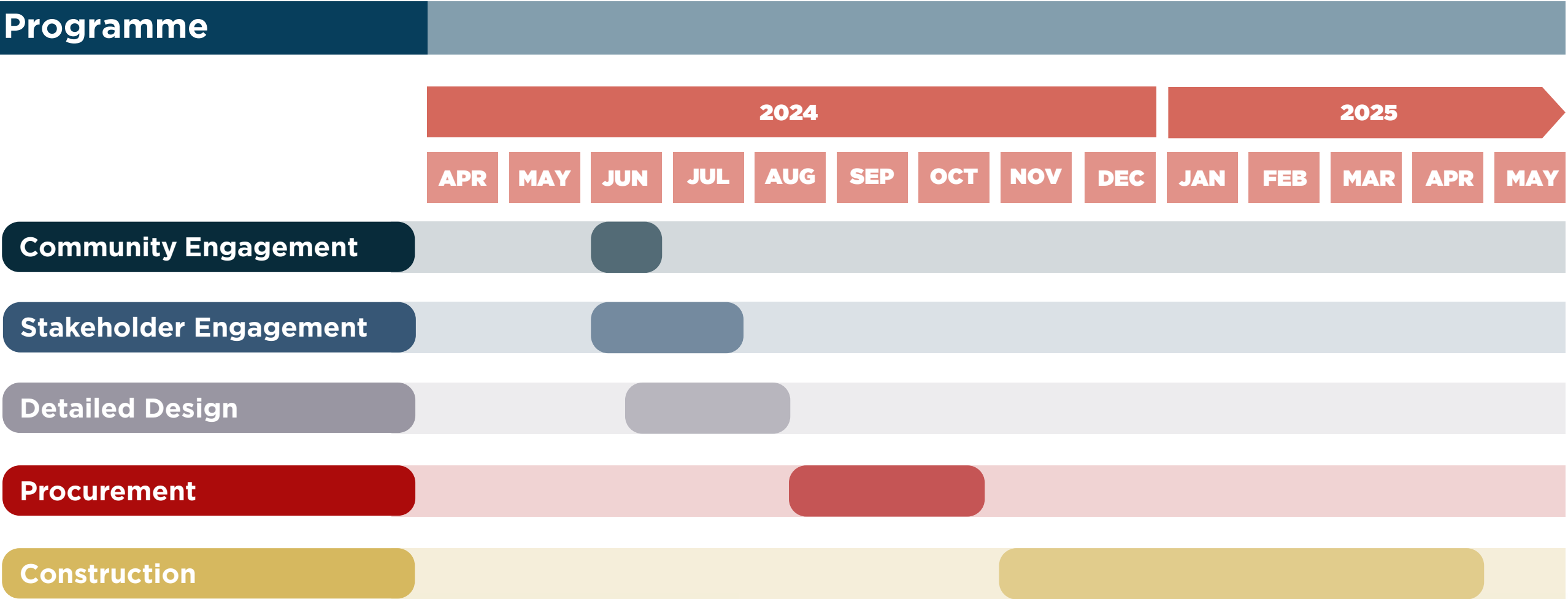
Neighbourhood Improvement Area

Public Realm Proposals

NEXT STEPS

The next stage will be to design the scheme in detail, including liaison with key stakeholders, regulators and suppliers, with the intention to begin construction from Winter 2024.

Programme



Contact

If you have any queries please contact us

**Call:**
01534 811811

**Email to:**
infrastructure@sthelie.je





PARISH OF
ST HELIER

